

GOING GREEN WITH EDMA® LONG LASTING TOOLS

PRODUCT QUALITY

Since it was created in 1937, EDMA® has developed a « GOING GREEN WITH EDMA® LONG LASTING TOOLS » approach.

The group has then passed ISO 9001 : 2000 certification for all its production processes.

In order to ensure optimal product quality, the company has designed and produced these tools in France since 1937. Each division of the group enforces strict quality controls during the various production processes. Each EDMA® product is tested under its specific conditions of use before commercialisation.

EDMA® tools are manual tools, requiring 100%-renewable energy : the user !

R&D

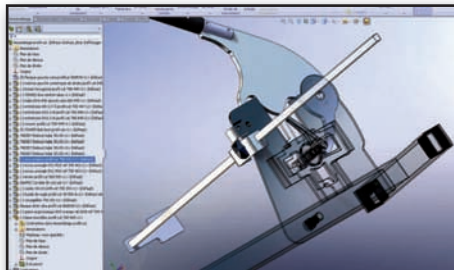


Our aim is to always respond to professional needs, anticipate and enlarge the product range, whilst respecting and protecting the environment.

The « Research & Development » division, equipped with CAD and CAAD software, reacts to building trade/public works market evolution/changes in France and on a European scale.

In order to guarantee professional tools, which are as sturdy, as satisfactory as they are innovative, each prototype undergoes endurance tests and has to conform to precise specifications, which are based on field studies, in order to optimise their ergonomics and comfort of use.

In pursuing its international development, the company does not hesitate to design products which respond to specific market demands and where materials are used in ways that differ from European applications. A constant process of submitting patent applications, brands and models goes with the launching of EDMA® innovation.



PRODUCTION

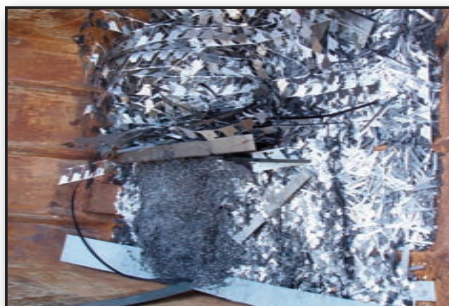


In order to preserve the environment of the planet, EDMA® group has always pursued a strategy aimed at sustainable development :

- While EDMA® products are being manufactured, there is absolutely no emission of toxic substances into the atmosphere.
- Production sites recycle all scrap metal and cartons.
- EDMA® Group headquarters are situated in an industrial techno park, where each company is required to respect compulsory ecological norms, namely : rigorous sorting of daily waste, energy consumption reduction and respect of green spaces.

SAFETY

EDMA® tools are designed so as to limit



effort during use and provide optimal comfort to the user. They are reliable to use and do not produce any noise or dust pollution that could be harmful to the user's health. EDMA® tools do not only guarantee industrial protection, they also ensure manufacturing reliability, due to a purchasing policy based on constant surveillance of strict criteria regarding raw materials.



SERVICE QUALITY

DELIVERY TIMES : The group divisions in charge of the supply chain can count on the best storage and shipment equipment, in order to respond to very short lead times for orders.

MARKETING SERVICE : The EDMA®



group has its own marketing service that is able to offer, « à la carte » and with great flexibility, all communication support and promotional material to its customers (point-of-sale advertising, folders, personalised promotional activities, etc....)

COMMERCIAL SERVICE France : EDMA® sales force covers all regions. They are at your service and maintain a permanent link between you and our services.

COMMERCIAL SERVICE EXPORT : In order to serve you better, throughout the whole world, EDMA® is present in more than 60 countries on 5 continents. The company is established in those countries through partner companies or sales representation.

PACKAGING

The new packaging EDMA® « TOUCH PACK » is now even more compact, while still preserving perfect visibility of the sales arguments, visualised by pictograms. It considerably reduces the volume of the packing and offers the possibility to clearly view and touch the product. This packaging is made from cardboard or recycled plastic and is 100% recyclable.

The print shops we select, according to our specific requirements, must imperatively be GREEN PRINT SHOPS.

